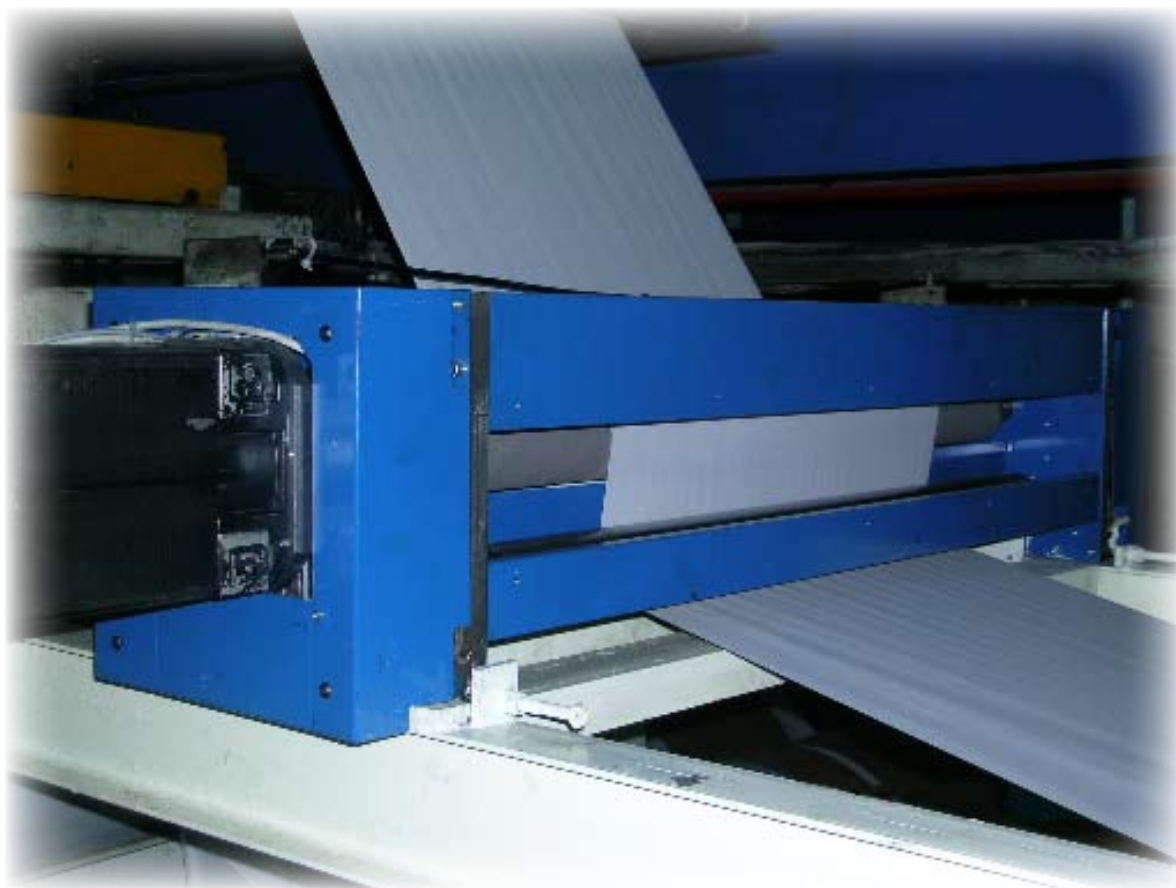


INFEED / OUTFEED



Simple & Compact Design



The Infeed / Outfeed is a freestanding automatic web tension unit, based on an ABB control system with feedback of the web tension (closed loop). The in/outfeed roller is driven by an AC-motor and covered with a special high friction surface. The tension is controlled by a loadcell roller towards the printing unit. External speed is recommended for optimal tension at high speed.

The unit is designed to be able to handle entering/exiting web angles in various directions. It can be mounted horizontally or vertically. The unit is prepared for single or double web-up tape. It is also internally wired, piped and connection to a terminal strip/pneumatic supply can easily be done by the customer.

The bottom line is process knowledge

INFEED / OUTFEED

AMERICAS

United States

MEGTEC Systems, Inc.
Telephone: +1-920-336-5715
Toll-free: +1-800-558-2884

**Solvent Recovery Division
MEGTEC Systems, Inc.**
Telephone: +1-772-567-1320

Brazil

MEGTEC Systems, Inc.
Telephone: +55-19-3885-6116

EUROPE

France

MEGTEC Systems SAS
Telephone: +33-1-69-89-4793

United Kingdom

MEGTEC Systems, Ltd.
Telephone: +44-1628-59-1700

MEGTEC Environmental Ltd.
Telephone: +44-1257-42-7070

Germany

**Sequa GmbH & Co.
MEGTEC Systems KG**
Telephone: +49-6181-94040

Sweden

MEGTEC Systems AB
Telephone: +46-31-65-7800

MEGTEC Systems Amal AB
Telephone: +46-532-62900

ASIA-PACIFIC

Singapore

**Singapore Sales Branch -
MEGTEC Systems SAS**
Telephone: +65-6298-4666

China

MEGTEC Systems (Shanghai) Ltd.
Telephone: +86-21-6769-7878

India

MEGTEC Systems India Pvt. Ltd
Telephone: +91-20-3231-2877 (78)

Japan

MEGTEC Systems, Inc.
Telephone: +81-78-783-0161

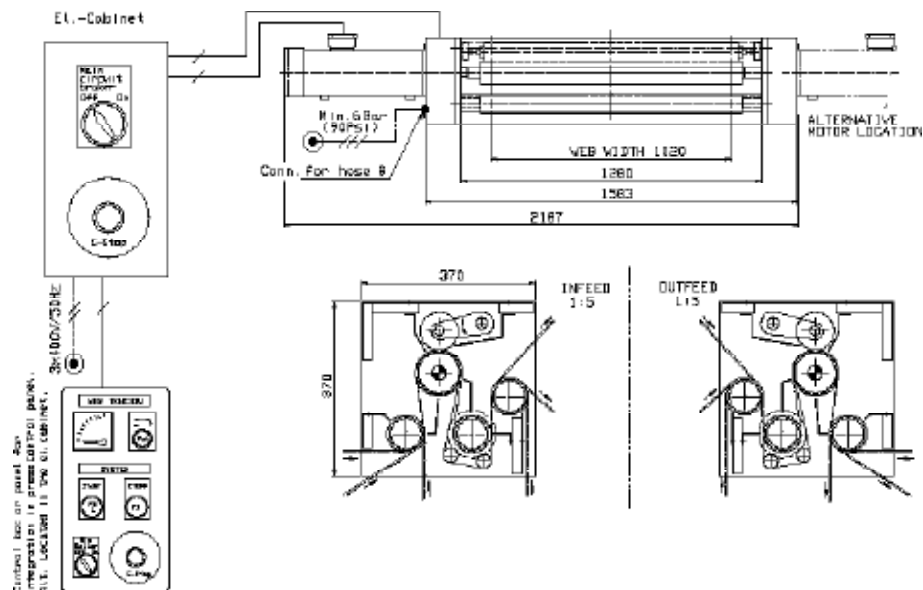
Australia

MEGTEC Systems Australia, Inc.
Telephone: +61-3-9574-7450

www.megtec.com
January 2008

Standard Features

- Constant web tension system, Infeed (IN) or Outfeed (OU)
- Close loop tension control via load cell system
- No mechanical controlled web tension
- Digital AC-drive system
- Compact design for easy installation
- Complete with substructure
- Dark blue color RAL 5007, custom colour as option
- CE, UL and CSA compliance



Performance Benefits

- Freestanding automatic web tension unit
- Improve print quality
- Up to 2625 fpm (800 m/min) max web press speed
- Up to 66 inches (1680 mm) max. web width
- Close loop tension control via load cells
- Versatile mounting – vertically or horizontally
- Pre-wired, pre-piped in factory

The overall dimensions are very small, which makes it easy to install the equipment in an existing press, or to integrate it into a new press installation.

Operating Specifications

Web tension range	Max 11-243 lbs (50-1100N)
Tension tolerance, steady running	2.2 lbs. (+/- 10 N)
Tension tolerance, E-stop fpm/s (1.5 m/s/s)	4.4 lbs. (+/-20 N)
Maximum web speed	2625 fpm (800 m/min)
Maximum web width	66 inches (1680 mm)
Compressed air supply	Min 73 psi (0.5 MPA)
Power supply	3ø460V-50/60 Hz (3x400V-50/60 Hz)